

# Software Intelligence

Dr. Florian Deißeböck  
27. Oktober 2016



1968

TUM

1998

TUM

2004

CQSE

2009

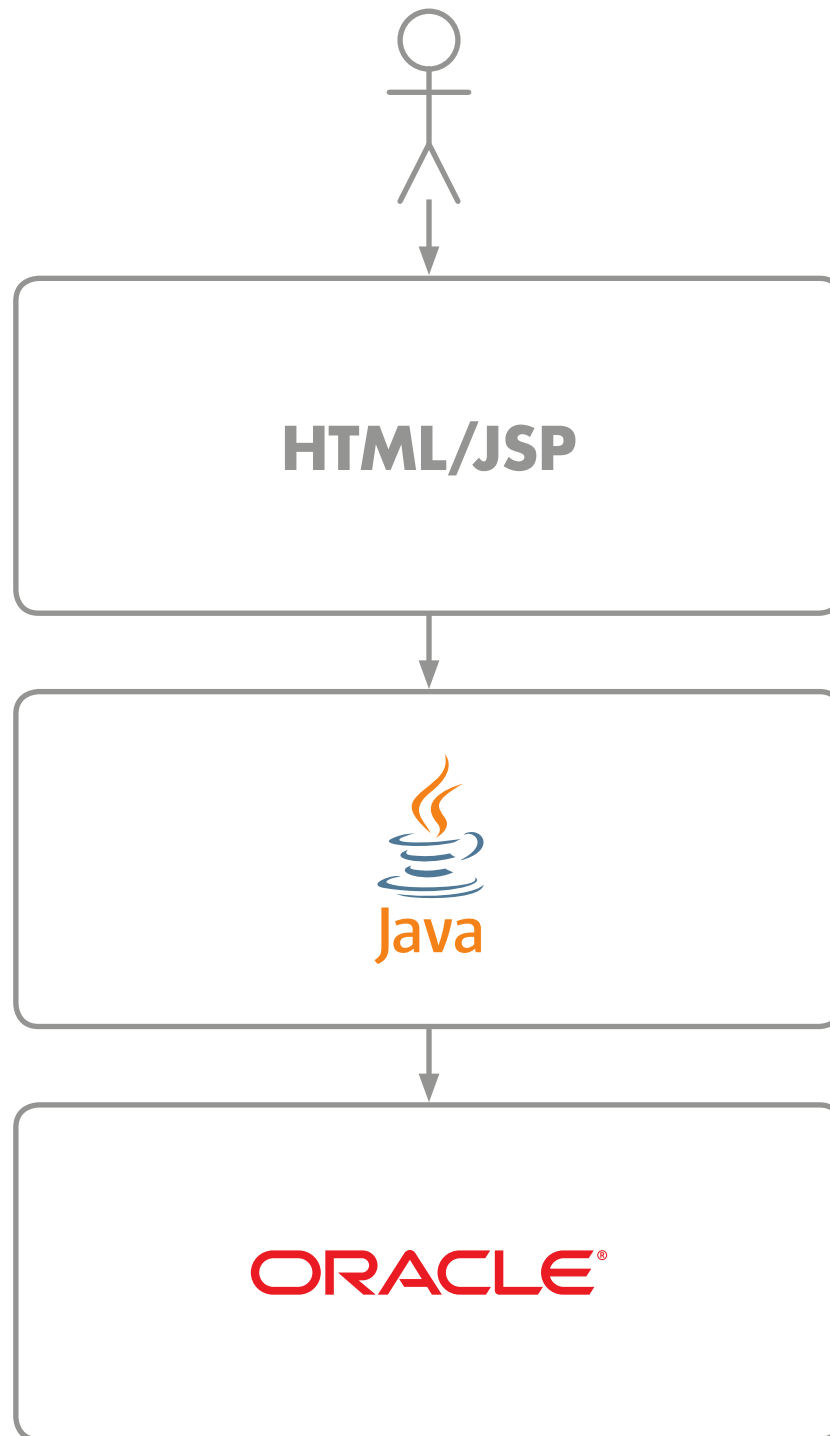
2016

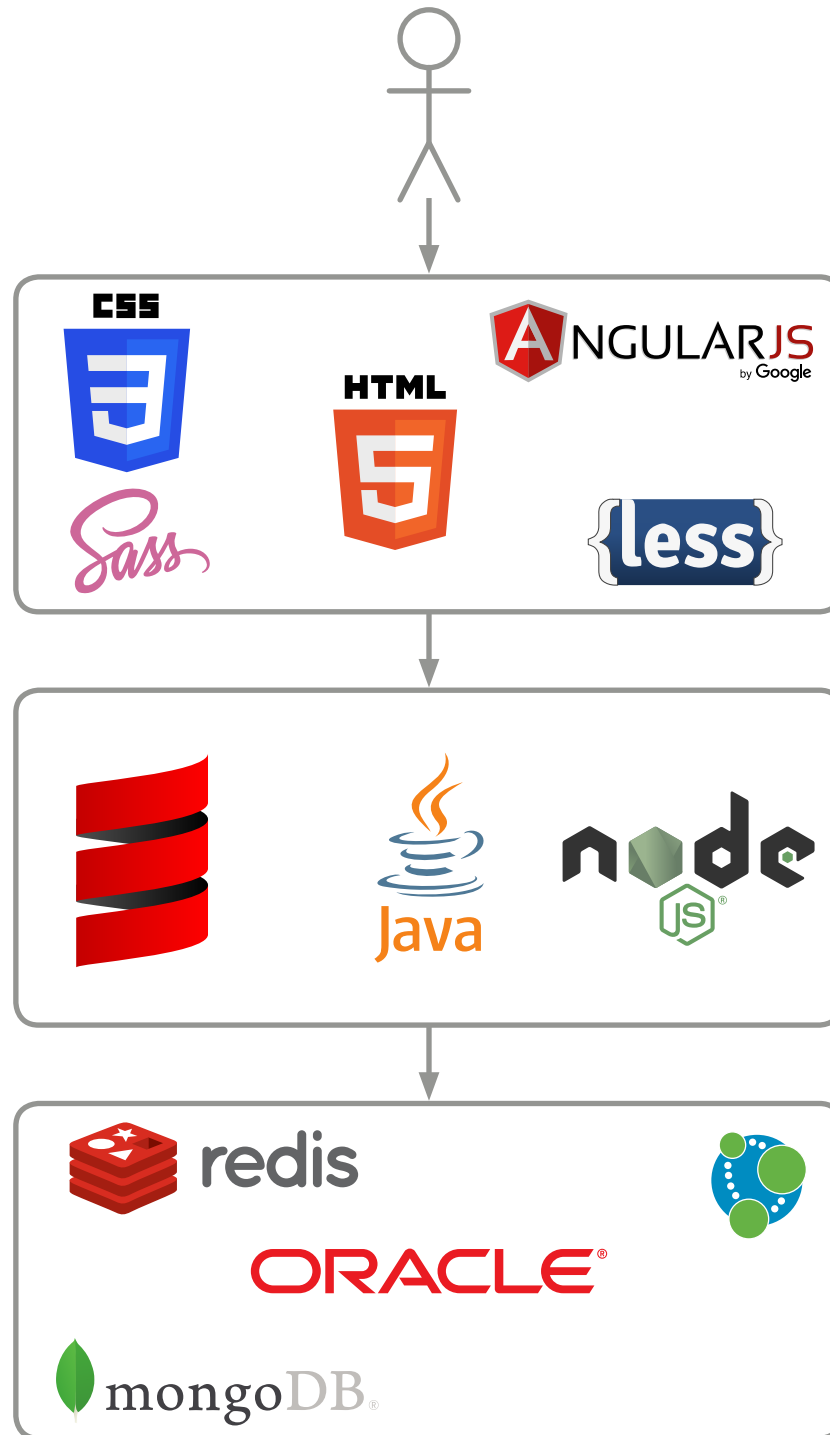
# Software Intelligence

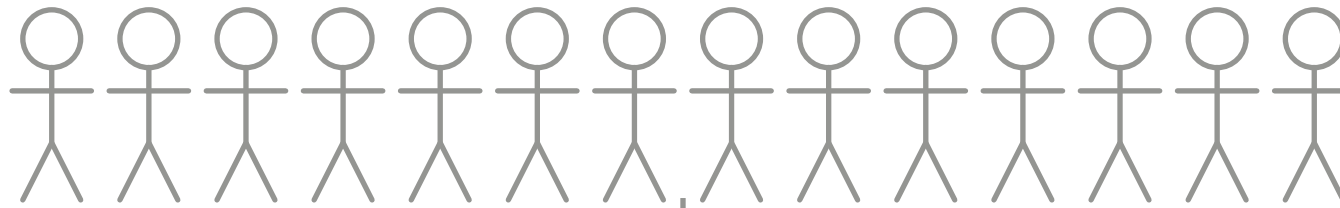
Dr. Florian Deißeböck  
27. Oktober 2016

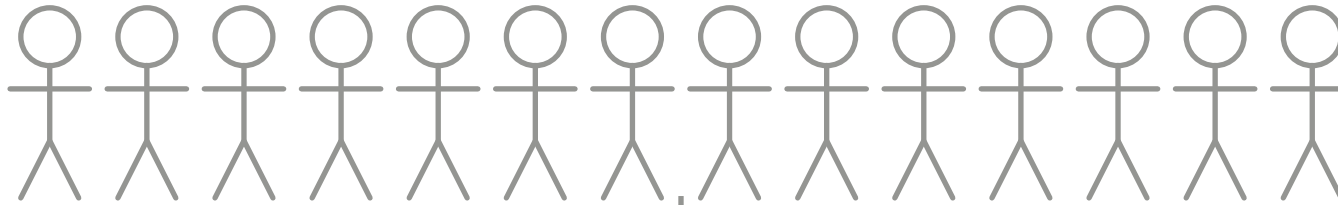
**CQSE**

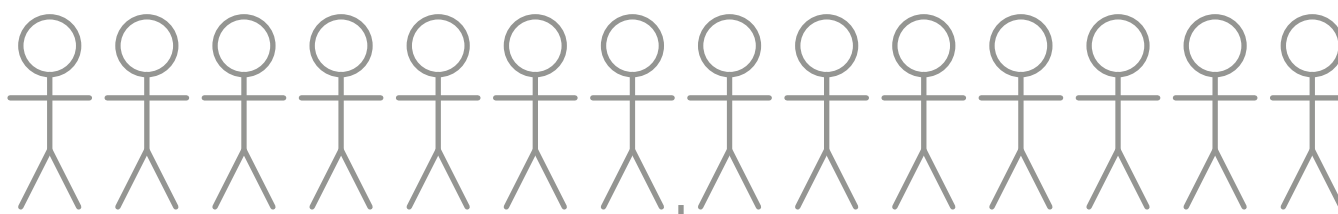
Continuous Quality in Software Engineering

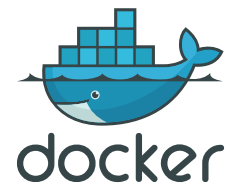
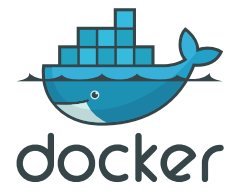
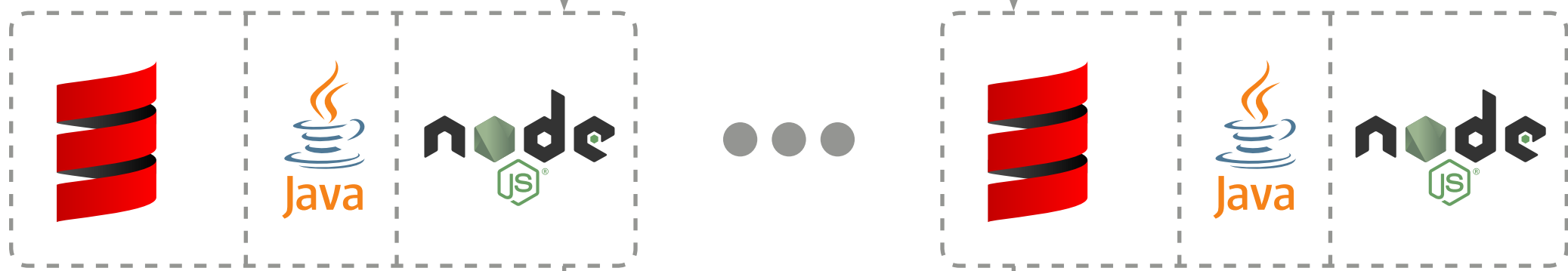
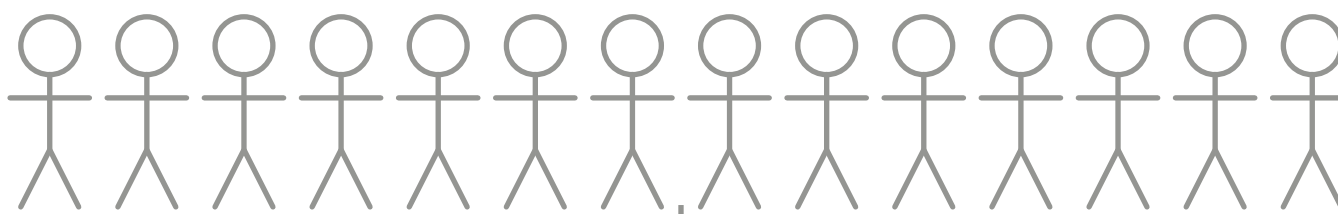




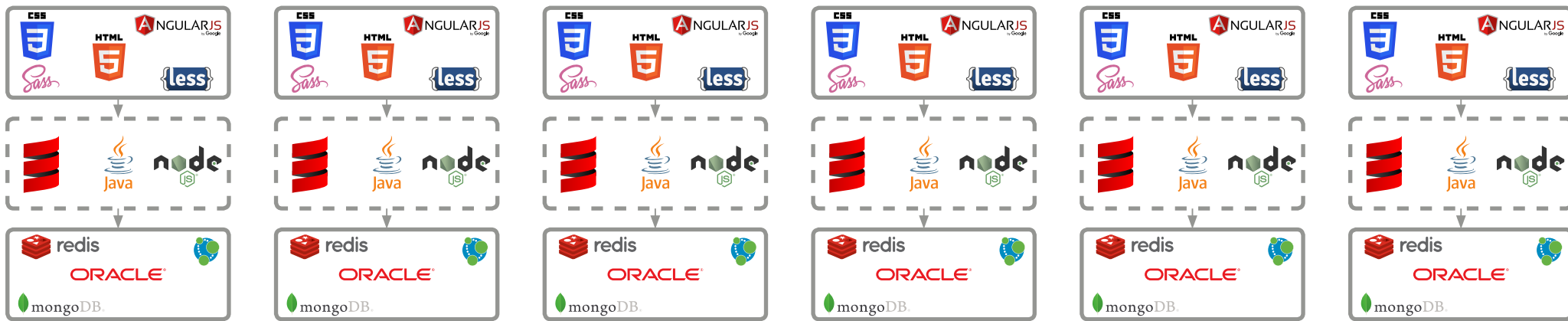


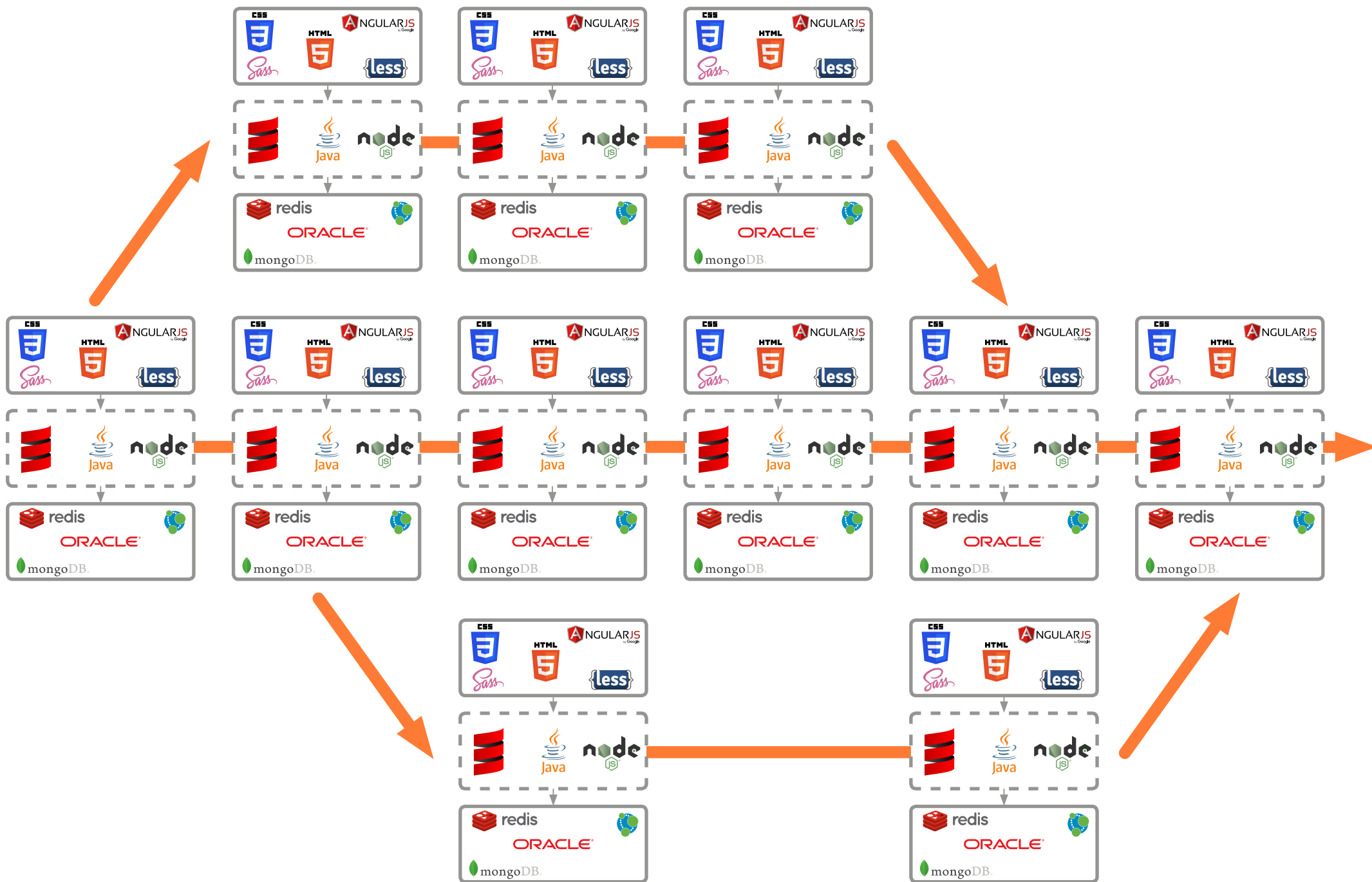












Wie wartbar ist unser Code?

Wo sind Lücken in meinem Test?

Ist unser Code konform zur Architektur?

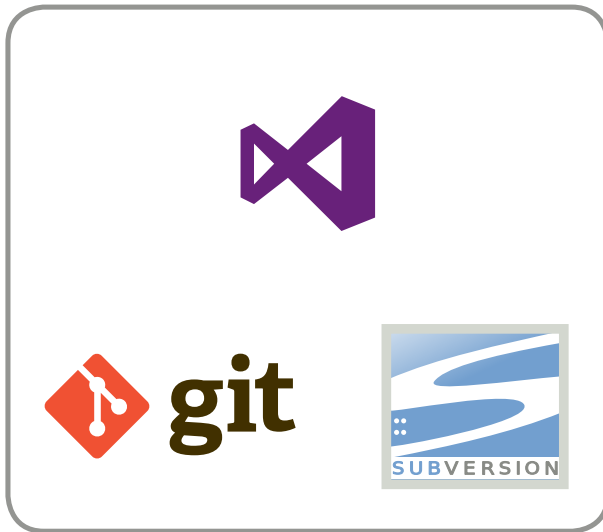
Wie hat sich meine Code-Qualität verändert?

Welche Systemteile sind am stärksten fehlerbehaftet?

Welche Änderungen wurden nicht gereviewed?

Welche Features werden nie genutzt?

Gibt es Kopfmonopole?



VCS



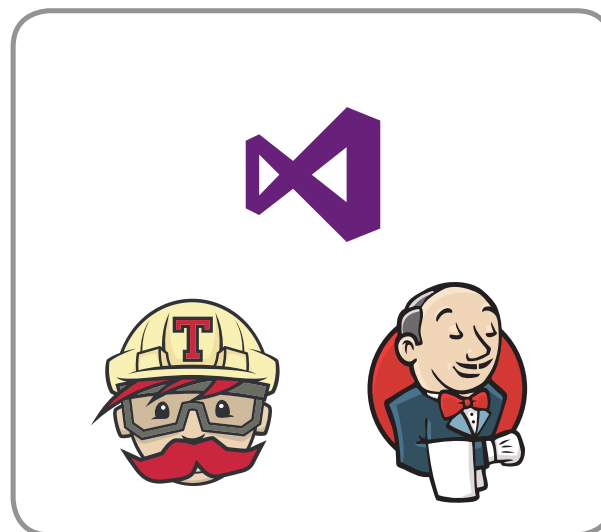
Issue-Tracker



Log-Dateien



Test-  
Werkzeuge



Build-Systeme

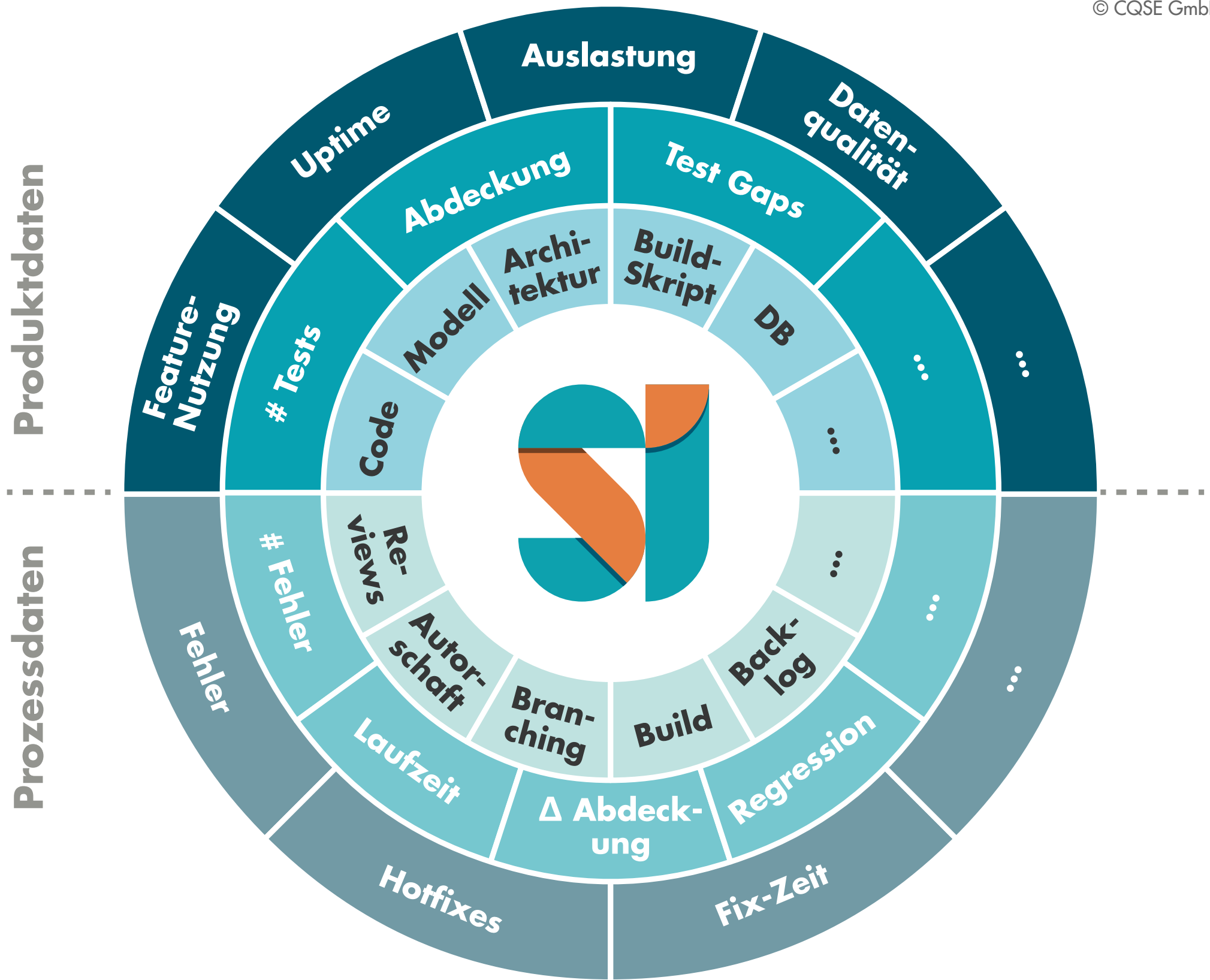


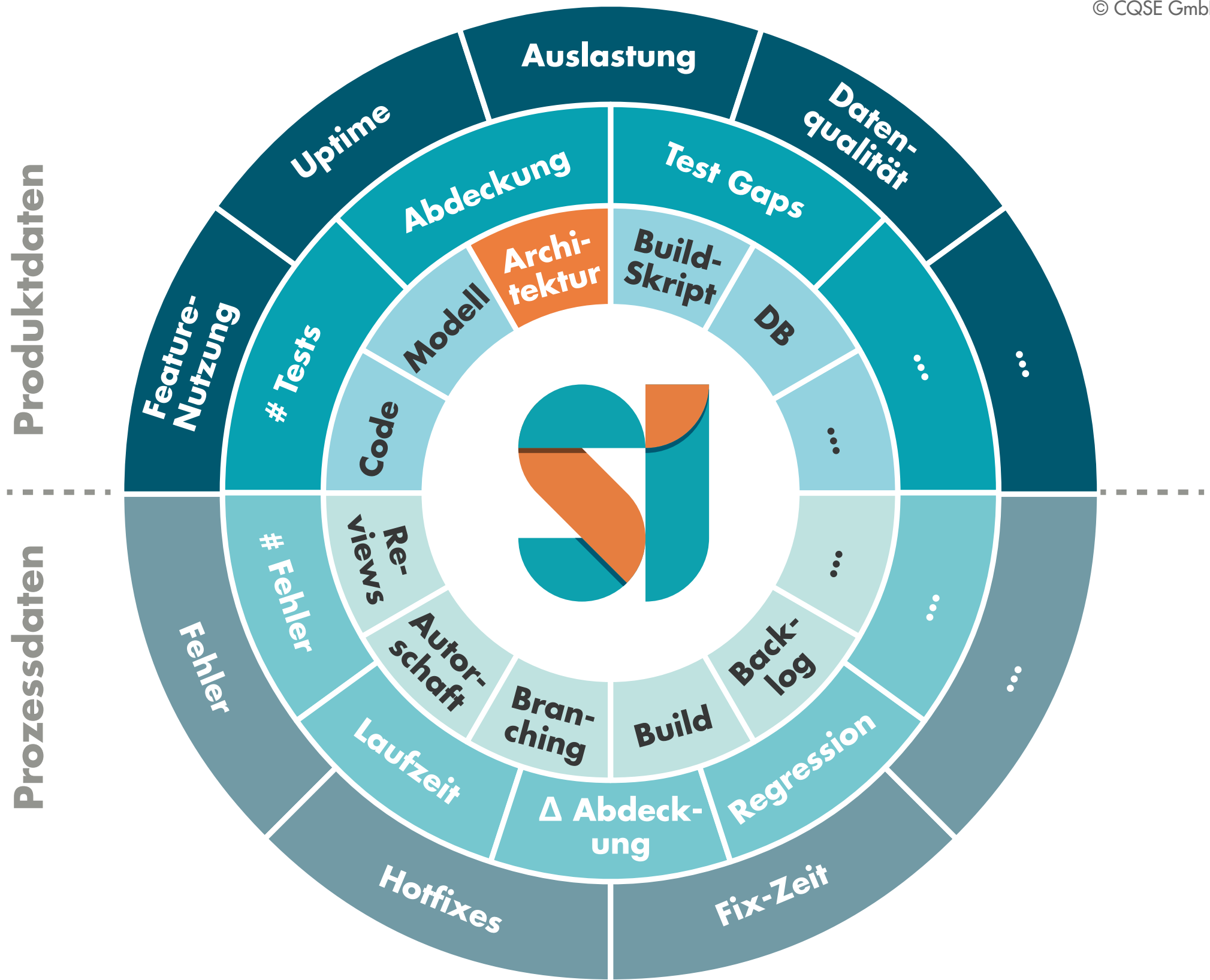
Monitoring-  
Systeme

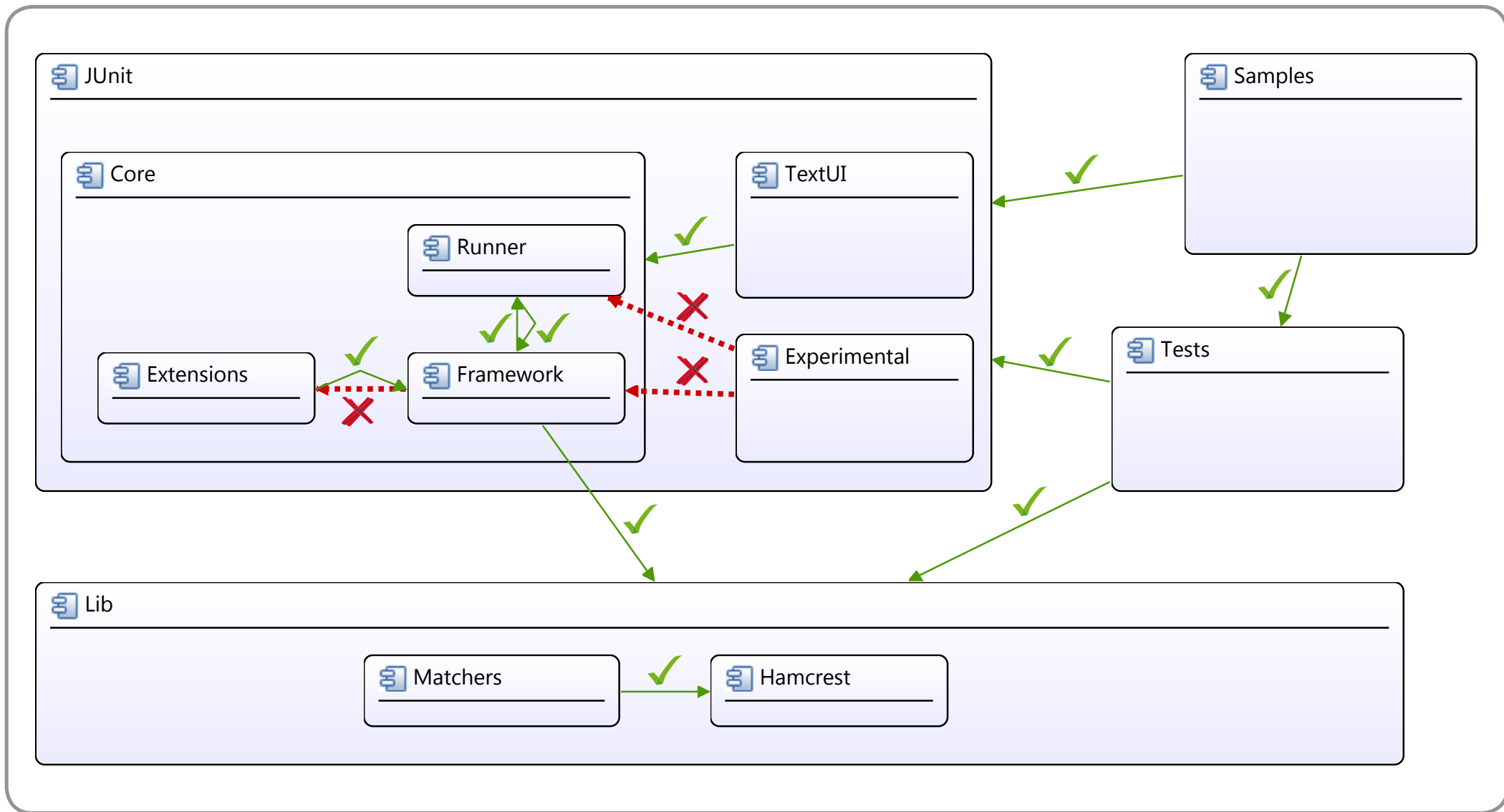
# Business Intelligence



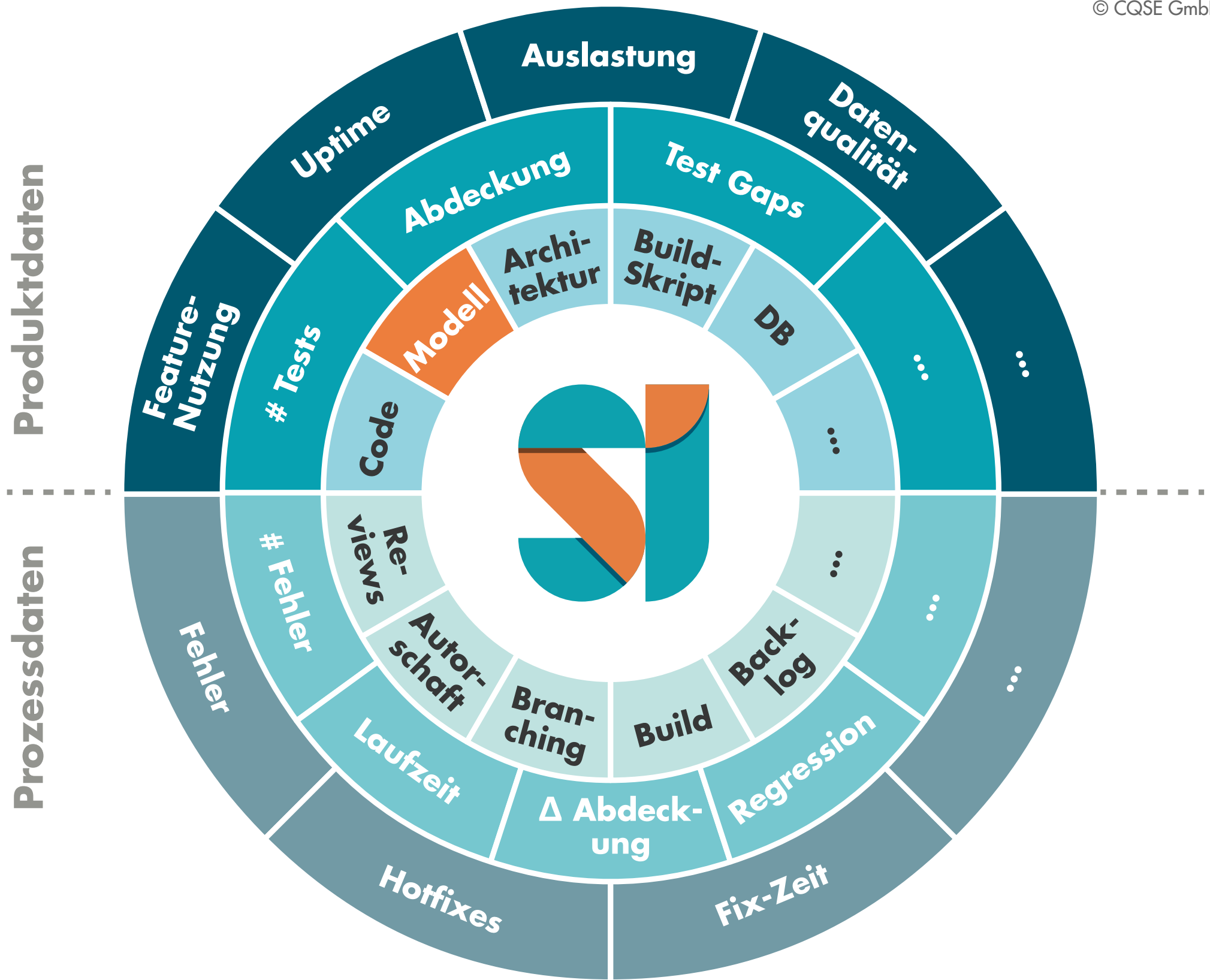
»A set of **techniques** and **tools** for the acquisition and transformation of **raw data** into meaningful and useful information for **business analysis purposes**.«













Dashboard

Activity

Findings

Tasks

Code

Audit

Architecture

Delta

Projects

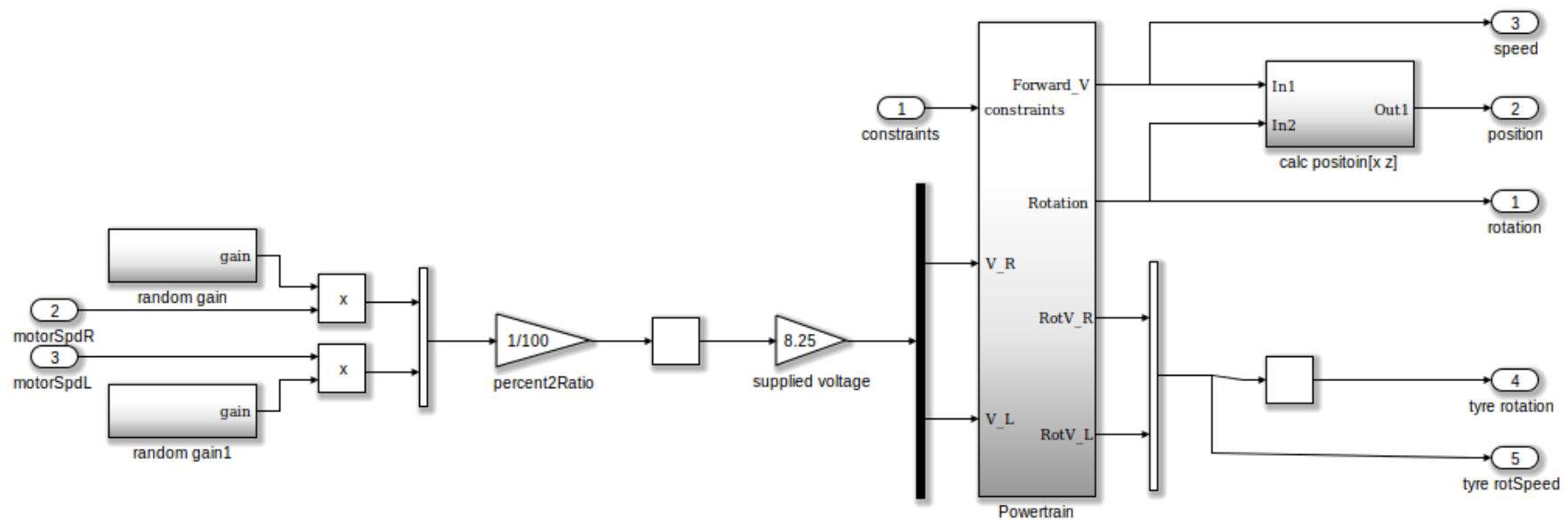
System

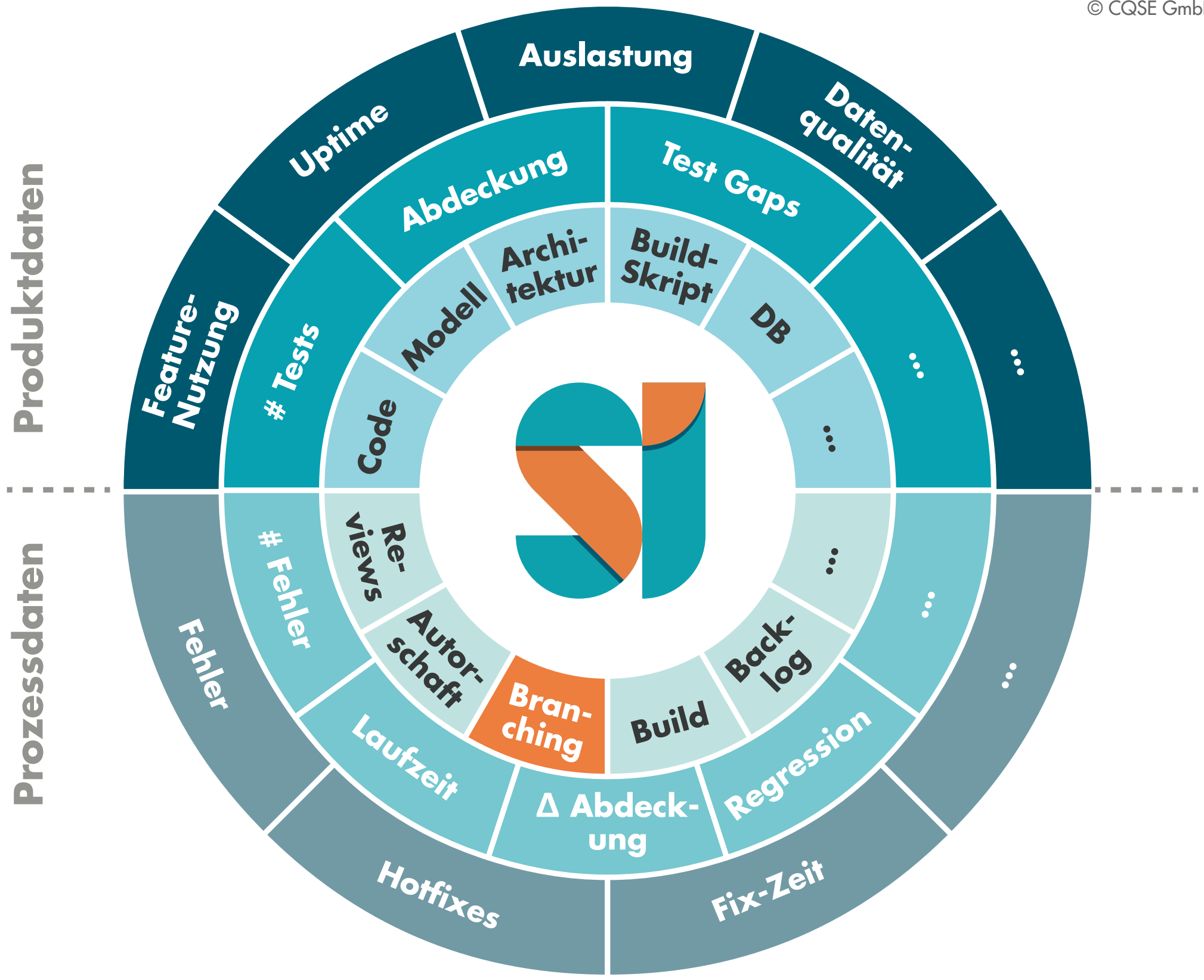
Admin

v mdl

[mdl](#) / [lib](#) / [org.conqat.lib.simulink](#) / [test-data](#) / [org.conqat.lib.simulink.smoke](#) / [internal\\_nxtmouse.mdl](#)

More ▾

[lib](#) ▶▶ [org.conqat.lib.simulink](#) ▶▶ [test-data](#) ▶▶ [org.conqat.lib.simulink.smoke](#) ▶▶ [internal\\_nxtmouse.mdl](#) ▶▶ [Robot\\_Mechanics](#)



Project: CQSE All With Branches Branch: master Timetravel: All Commits.



Merge remote-tracking branch 'origin/cr/9905'

Oct 20 2016

by [Lars Heinemann](#) in revision [3e9579a715a156d2e629fcb02a44f3c1d3ad0b5b](#) in branch master  
(repository1)  
Merged from [cr/9905](#)

14:34

Files: 3 changed  
Findings: 0



Merge branch 'master' into cr/10552\_branch\_coverage

Oct 20 2016

by [Benjamin Hummel](#) in revision [25692692f99563e104e167204f860ceec5fa92aa](#) in branch  
cr/10552\_branch\_coverage (repository1)  
Merged from [master](#)

14:24

Files: 13 added, 152 changed, 3 deleted  
Findings: 59 8 69



CR#9766: reviewed

Oct 20 2016

by [Lars Heinemann](#) in revision [ed133b7b146e1d5051c19995a0be058f48a0c0b9](#) in branch master  
(repository1)

14:22

Files: 2 changed  
Findings: 8



CR#10552 GREEN (with Thomas)

Oct 20 2016

by [Benjamin Hummel](#) in revision [31b76706e1d6a7600762d5881f5850ef8da06bad](#) in branch  
cr/10552\_branch\_coverage (repository1)

14:19

Files: 7 changed  
Findings: 11



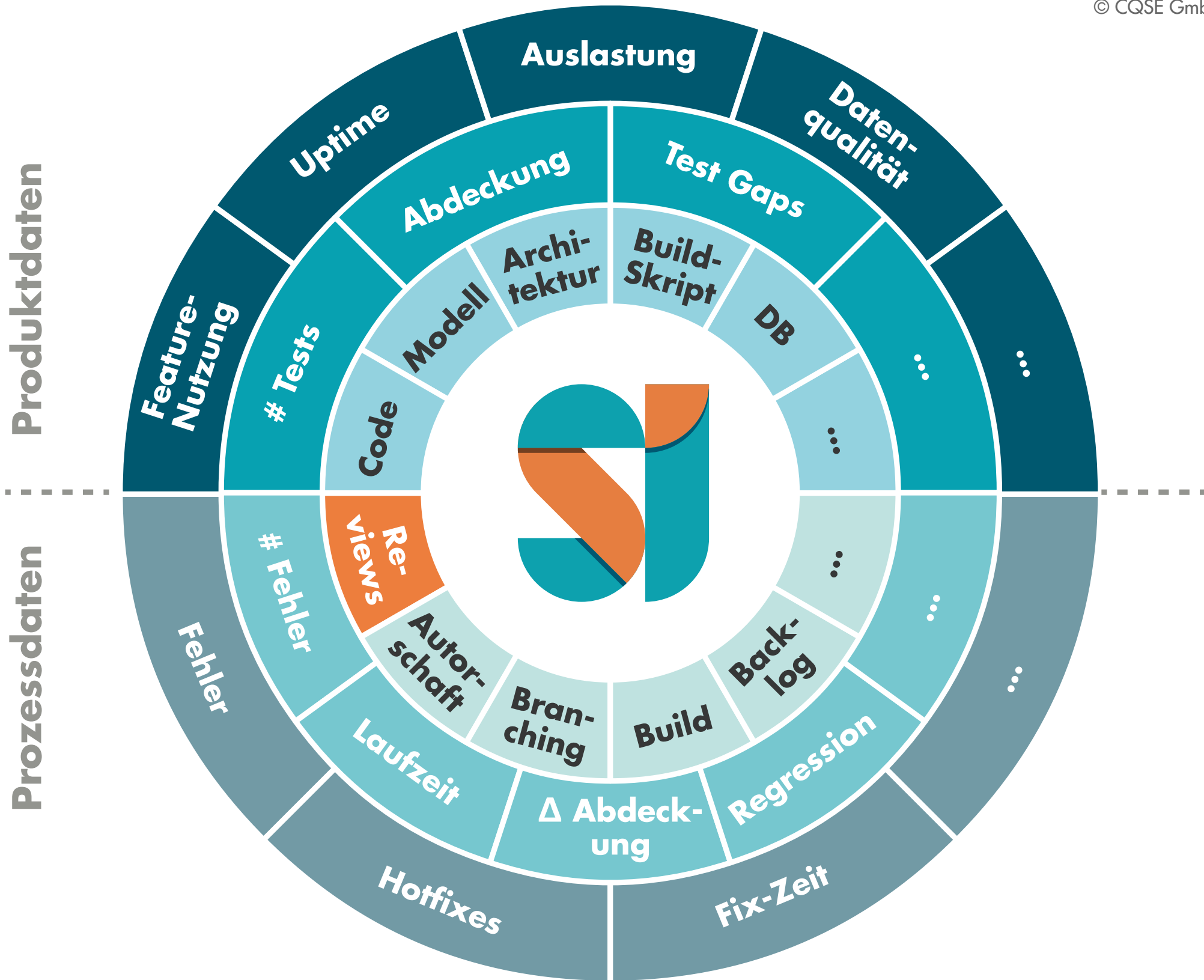
CR#0: trying to fix test

Oct 20 2016

by [Lars Heinemann](#) in revision [87d74fd92ba06f9b3f43be63a641008bdf8ed0a1](#) in branch master  
(repository1)

13:24

Files: 1 changed  
Findings: 0





### Improved handling of detail configs

by Andi Scharfstein in revision [0b3a1c4487323502082b761ac4d5bdee0cea5d27](#) in branch master (repository1)

Files: 6 changed

Reviews: [CR-17](#)

Findings:

Mar 29 2016

18:37



### Fixed processing of detail configs

by Andi Scharfstein in revision [332f349f3d36f970a8b3cea764eaa071dac7173b](#) in branch master (repository1)

Files: 7 changed

Reviews: [CR-17](#)

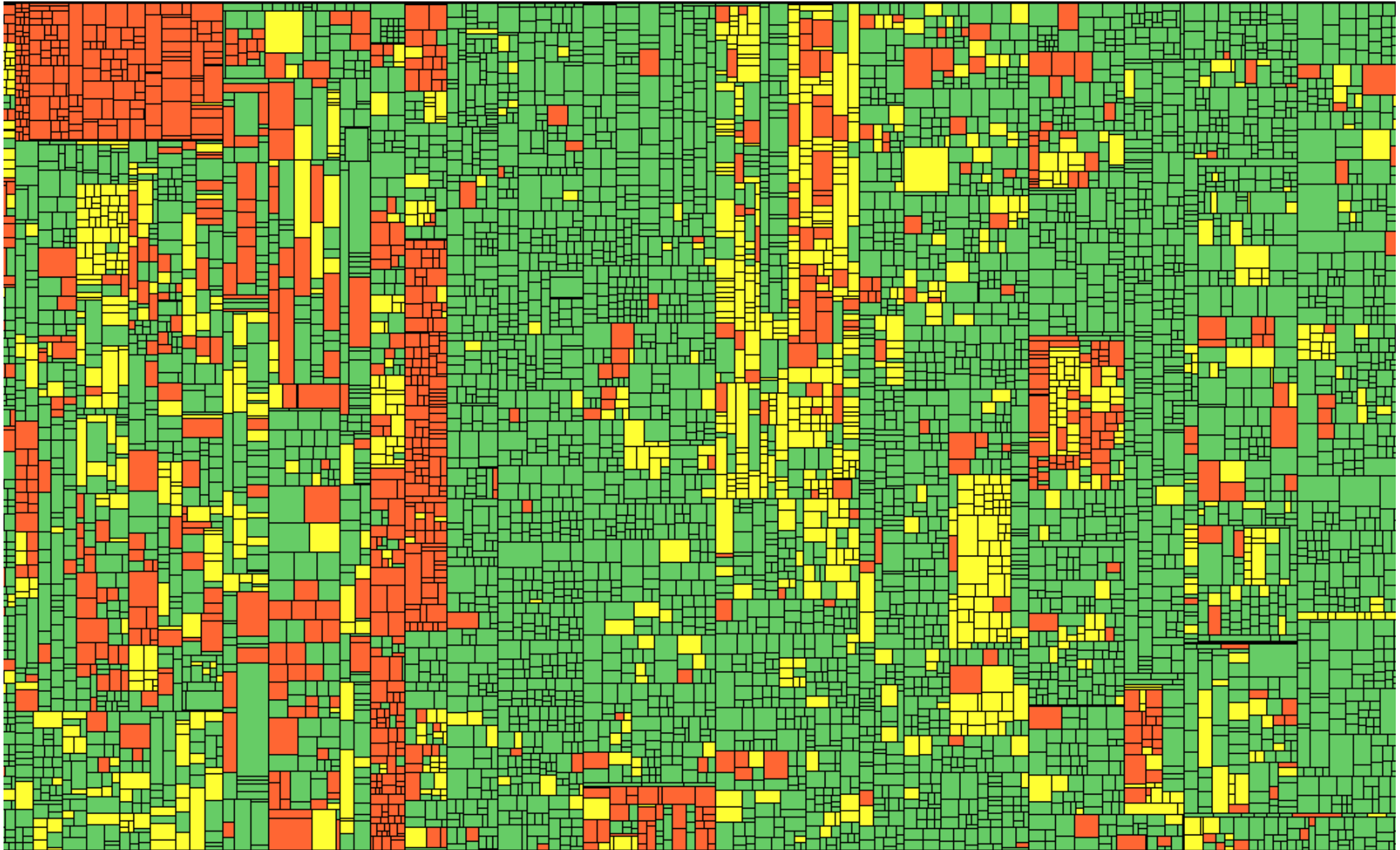
Findings:

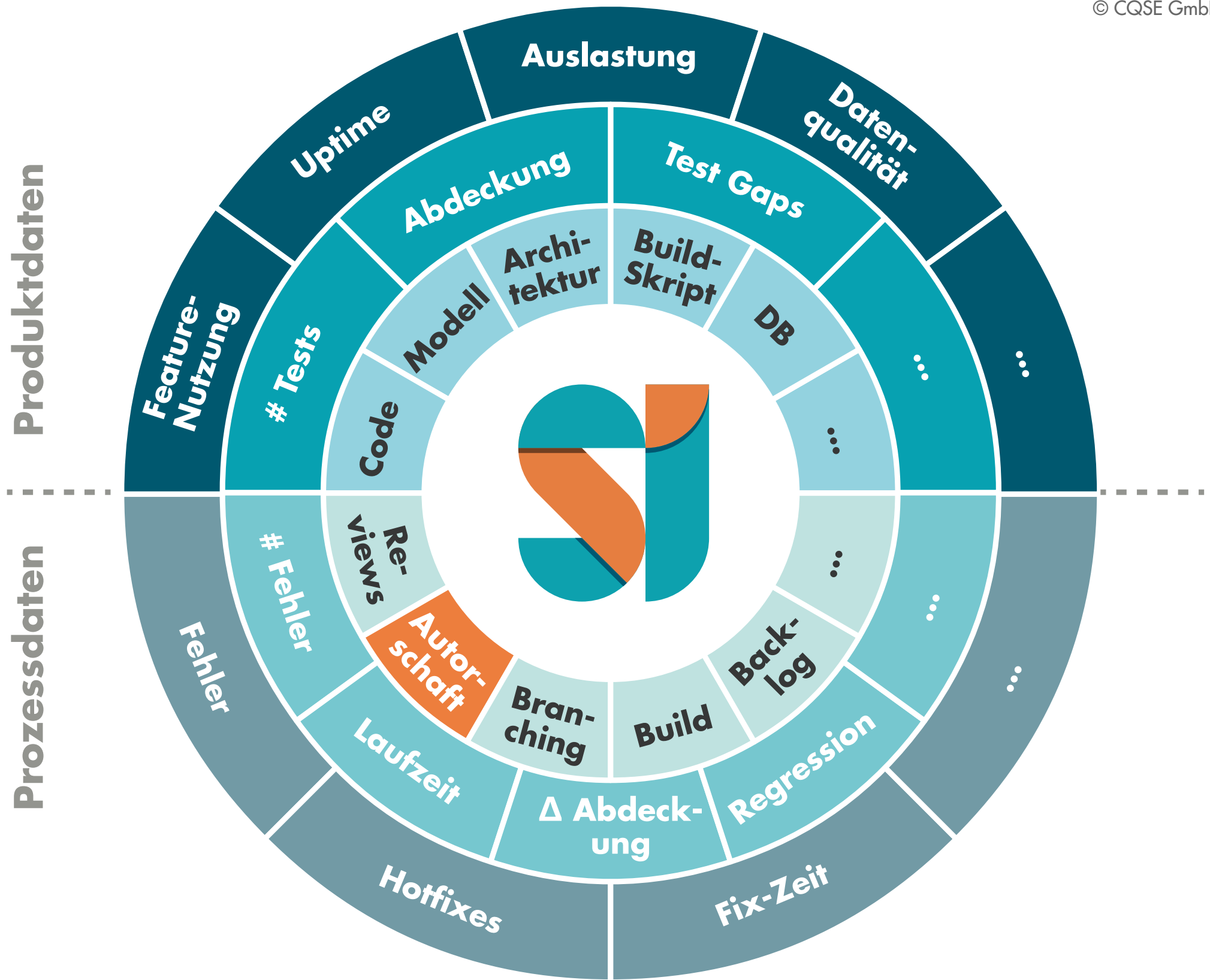
Mar 29 2016

14:08

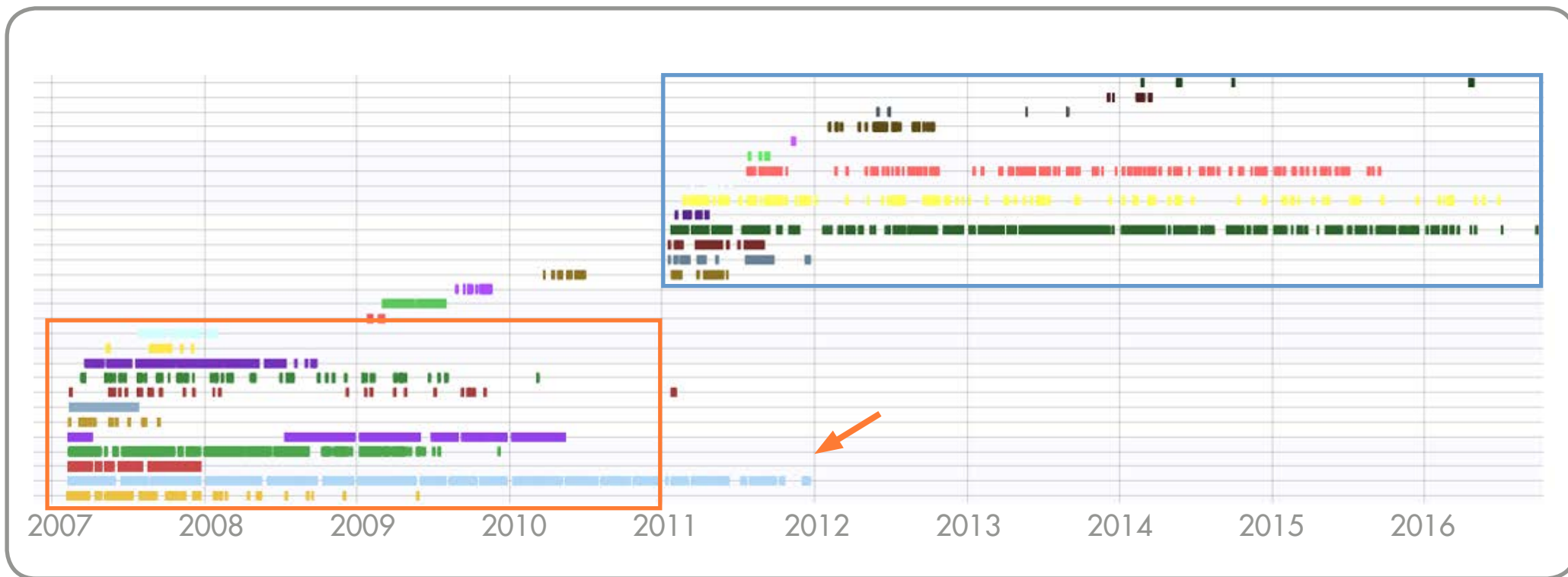
#### ⌵ Affected files (6)

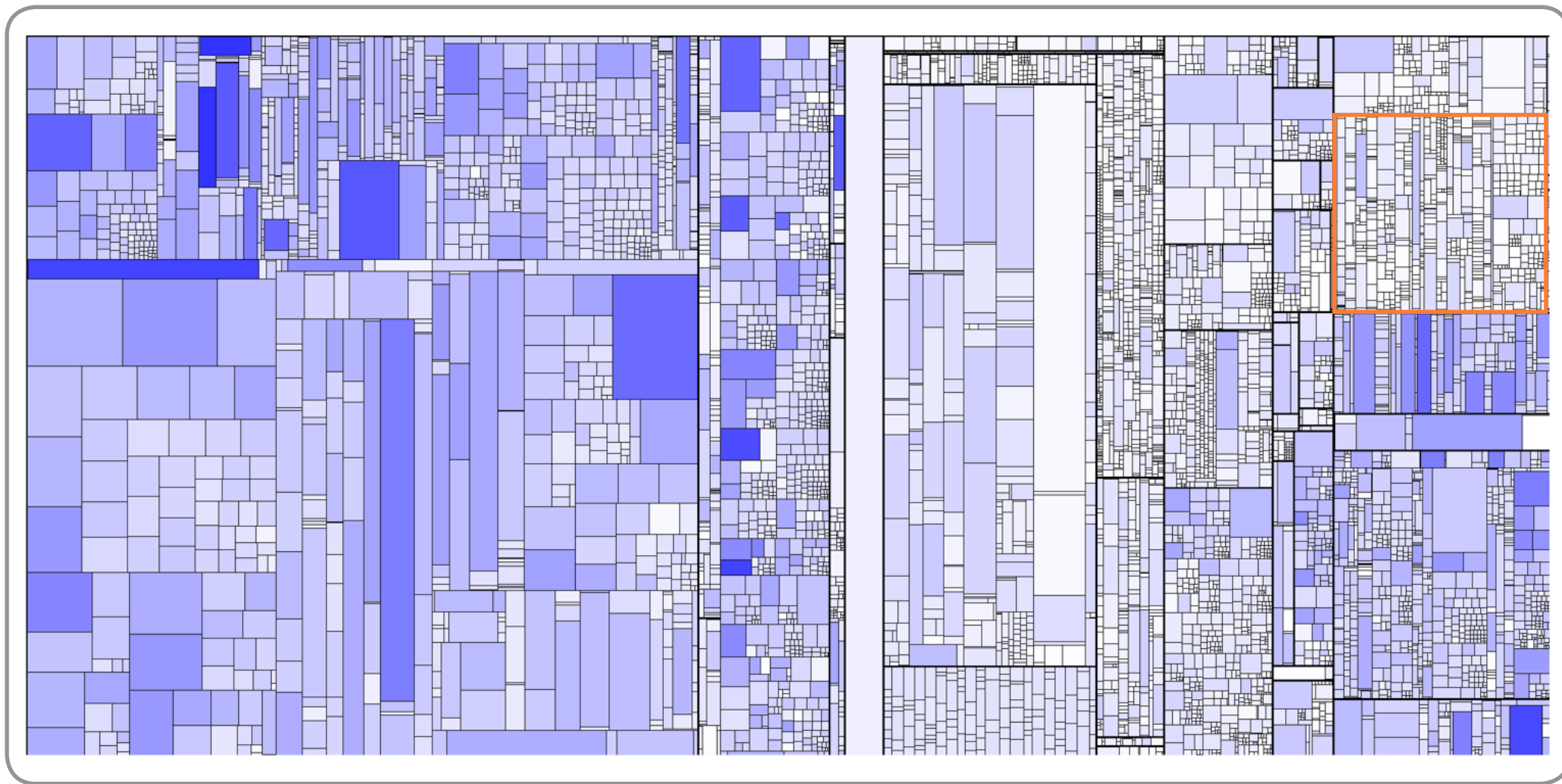
Path	Open Reviews	Completed Reviews	Change type
<a href="#">src/main/java/org/synchron/event/calendar/AttributeMatcher.java</a>	<a href="#">CR-17</a>		changed
<a href="#">src/main/java/org/synchron/event/calendar/CalendarEntryBuilder.java</a>	<a href="#">CR-17</a>		changed
<a href="#">src/main/java/org/synchron/event/calendar/DocumentParser.java</a>	<a href="#">CR-17</a>		changed
<a href="#">src/main/java/org/synchron/event/calendar/Main.java</a>	<a href="#">CR-17</a>		changed
<a href="#">src/main/java/org/synchron/event/calendar/UrlLoader.java</a>	<a href="#">CR-17</a>		changed
<a href="#">src/main/java/org/synchron/event/calendar/configuration/SiteConfig.java</a>	<a href="#">CR-17</a>		changed

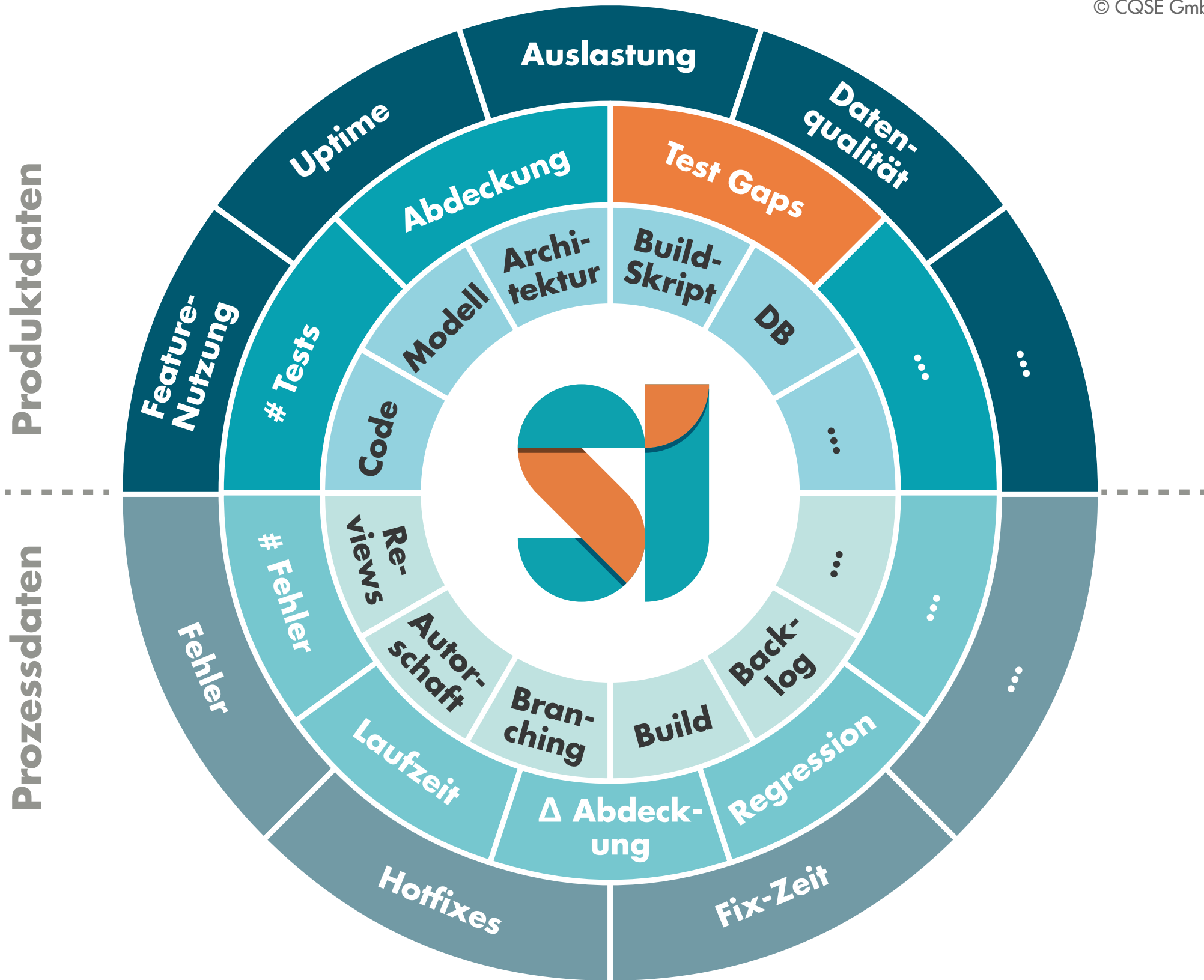






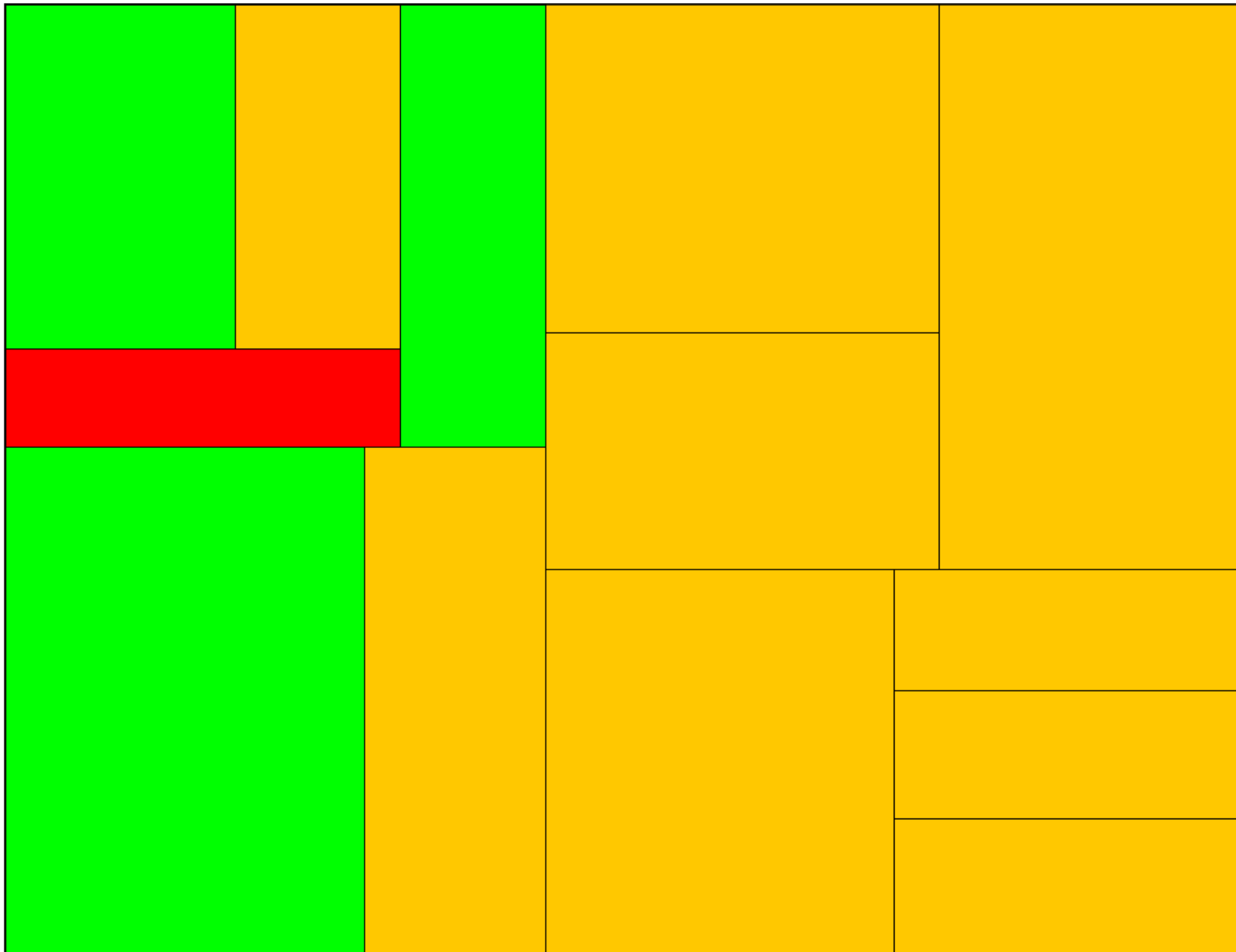


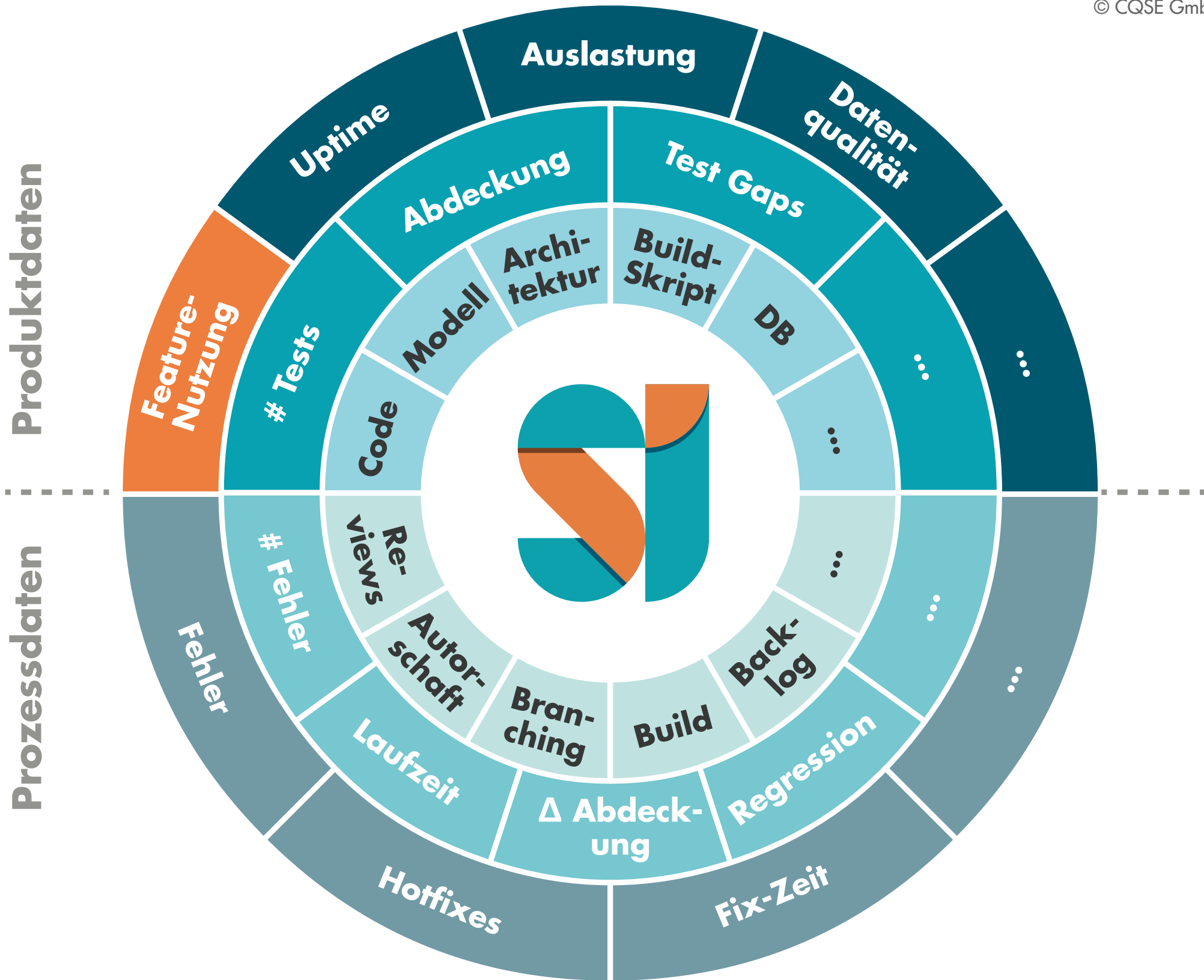


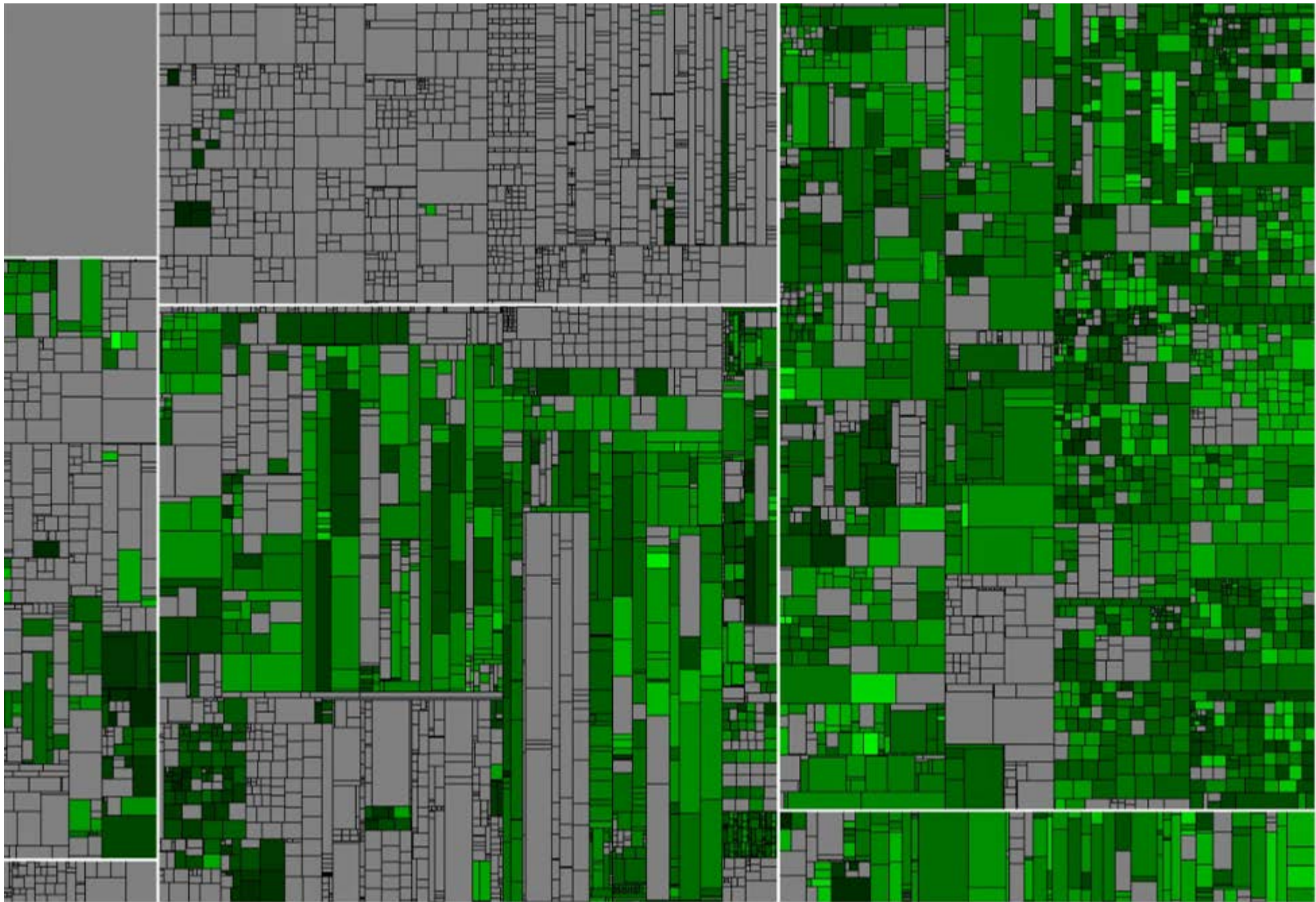


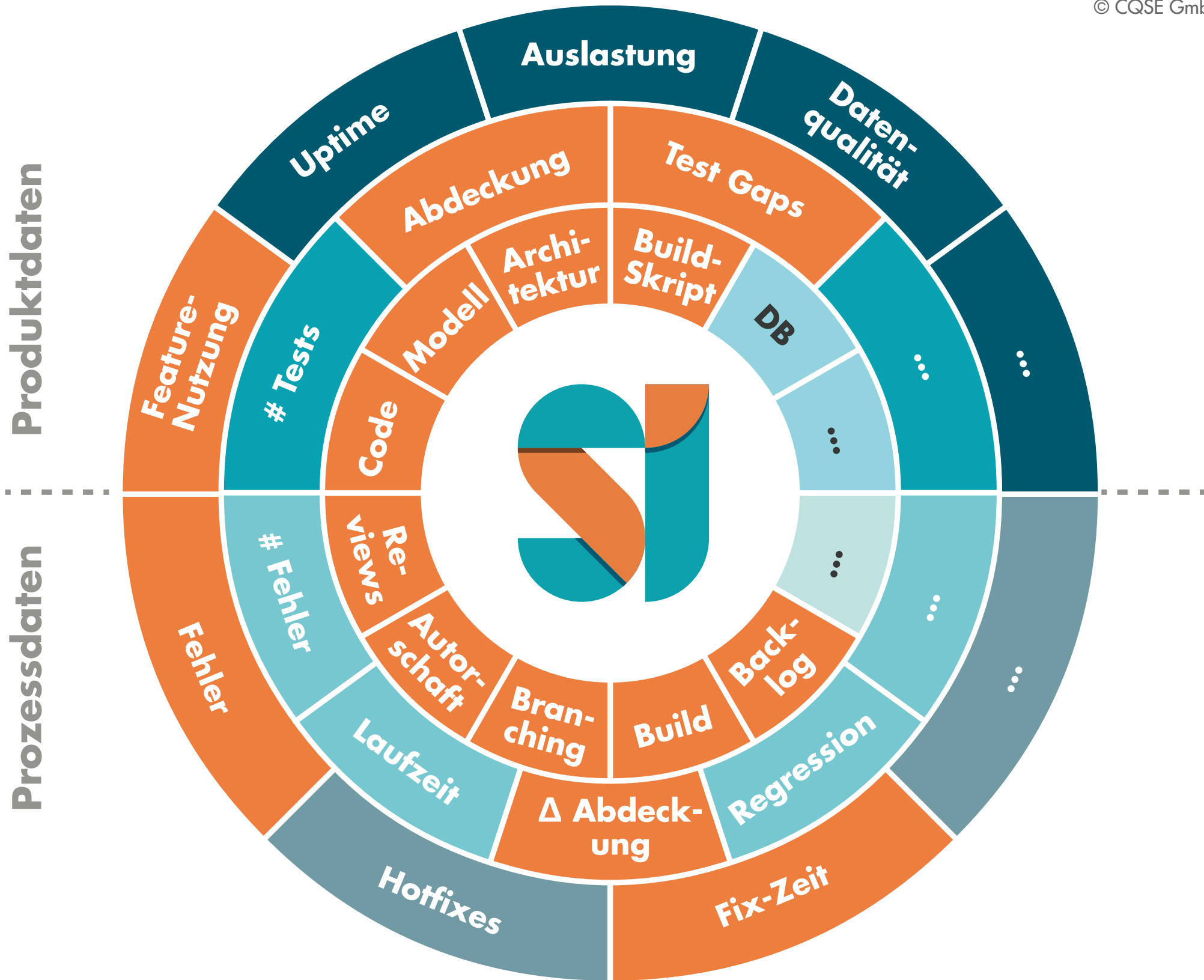
## Test Gap Treemap for pinta

Showing issue 10296 Test Gap: 76.92%











Dr. Florian Deißböck  
deissenboeck@cqse.eu  
+49 179 7857188  
@deissenboeck



[www.cqse.eu](http://www.cqse.eu)  
@cqse



[www.cqse.eu/en/blog](http://www.cqse.eu/en/blog)



[www.teamscale.com](http://www.teamscale.com)  
@teamscale